

STANDARD DEPARTURE CHART - INSTRUMENT (SID)

TRANSITIONAL ALTITUDE **7000'**
TRANSITIONAL LEVEL **ATC**

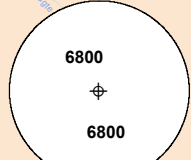
KIMBERLEY TWR: 118.20
APN: 122.65
BLOEMFONTEIN APP: 124.30

KIMBERLEY NAV (GNSS) RWY 02 UNRAG 1A

ELEV, ALT & HGT IN FEET
DIST IN NM
BRG ARE MAG
VAR 21°W (2017)

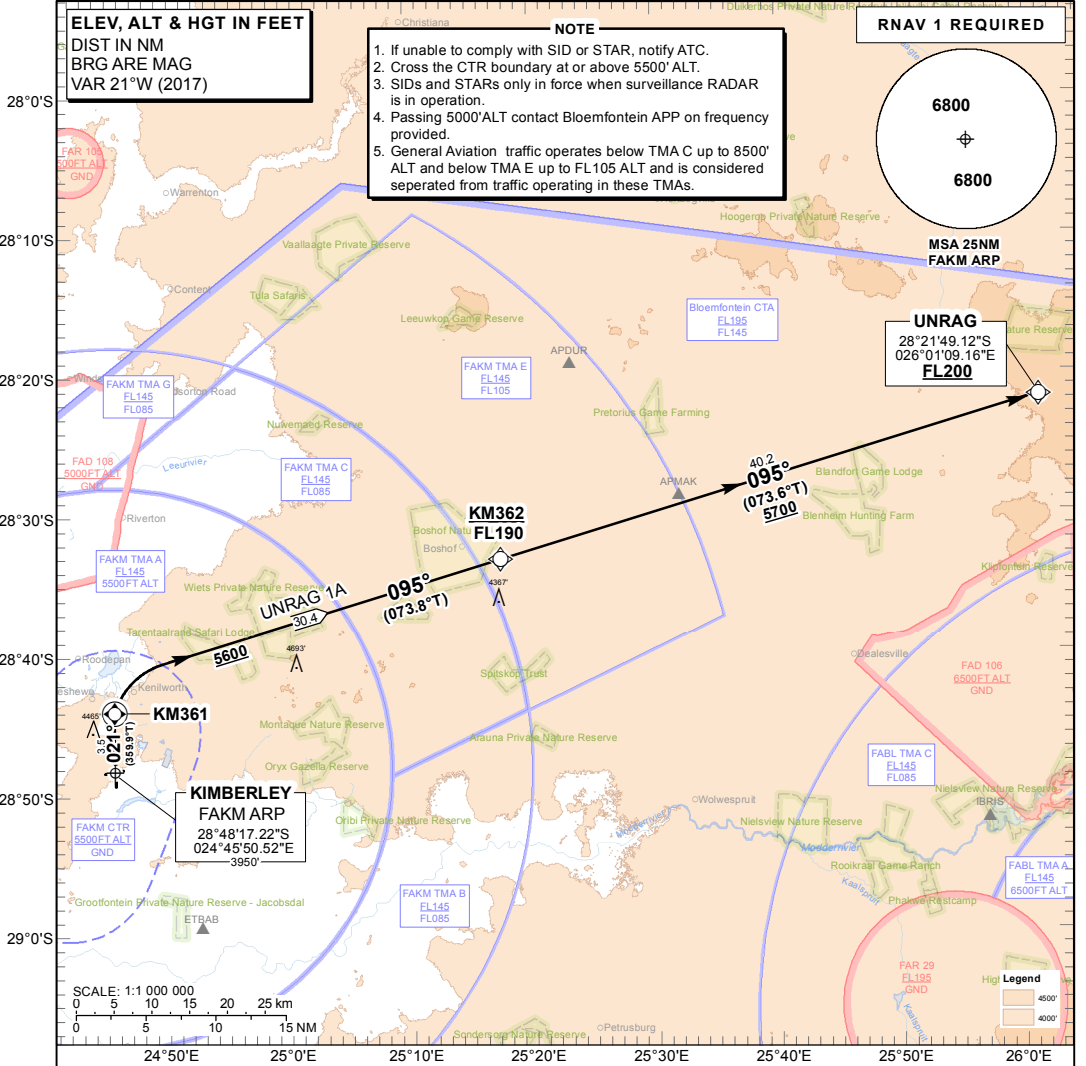
- NOTE**
1. If unable to comply with SID or STAR, notify ATC.
 2. Cross the CTR boundary at or above 5500' ALT.
 3. SIDs and STARs only in force when surveillance RADAR is in operation.
 4. Passing 5000'ALT contact Bloemfontein APP on frequency provided.
 5. General Aviation traffic operates below TMA C up to 8500' ALT and below TMA E up to FL105 ALT and is considered separated from traffic operating in these TMAs.

RNAV 1 REQUIRED



MSA 25NM FAKM ARP

UNRAG
28°21'49.12"S
026°01'09.16"E
FL200



UNRAG 1A: RWY 02

Climb to FL200. Maintain RWY track 021°M to KM361. At KM361 turn right direct to KM362. Reach KM362 at FL190 or below. At KM362 route to UNRAG. At UNRAG set course as per flight plan.

Restricted to a minimum climb gradient of 5.3% until KM361, thereafter 3.5% until UNRAG.

- 5.3% @ 140KT IAS = 751 FPM
- 5.3% @ 160KT IAS = 859 FPM
- 5.3% @ 180KT IAS = 966 FPM
- 5.3% @ 200KT IAS = 1073 FPM
- 5.3% @ 220KT IAS = 1181 FPM

COMMUNICATION FAILURE PROCEDURE (Squawk 7600)

Comply with UNRAG 1A RNAV (GNSS) SID. At UNRAG climb to flight plan level and set course as per flight plan.

Aircraft wishing to return to FAKM must continue as per the UNRAG 1A SID to UNRAG. At UNRAG turn right direct to ETBAB descending to FL110. Cross the TMA boundary at FL150 or above. At ETBAB comply with the RNP APCH RWY 02 Communication Failure Procedure.

CHANGE: New Procedure